



04/2024 SPLUGB191500
 Due to our policy of constant technological upgrading, technical specifications may be subject to change without prior notice. According to the standards in force, in extra-EU areas the availability and specifications of some products and/or characteristics may vary. Please contact your local distributor for further information.

Technical data	SW-17 PLUS	SW-22 PLUS	SW-28 PLUS
Power supply voltage	220/240V 50Hz 220/230V 60Hz		
Rated power	2300 W		
External dimensions W x H x D	480 x 500 x 600 mm		
Chamber dimensions Diam. x Depth	250 x 350 mm	250 x 450 mm	280 x 450 mm
Total weight	51 kg	52 kg	53 kg
Tank capacity	4.5 litres		
Autonomy (with max. water level)	From 7 to 11 cycles	From 6 to 10 cycles	From 5 to 9 cycles

CYCLE	Cycle type	Sterilization time [min.]	SW-17 PLUS	SW-22 PLUS	SW-28 PLUS	Drying *
Cycle times including sterilization times, net of drying times [min.]						
134 °C UNIVERSAL	B	4	32	36	41	13-17
121 °C UNIVERSAL	B	20	45	49	54	13-17
134°C VELOCE	S	4	20	23	26	1
134 °C WRAPPED SOLID INSTRUMENTS	S	4	18	20	24	13-17
134 °C PRION	B	18	46	50	55	13-17
XXX °C CUSTOM	S	Cycle can be personalised by user at temperatures 134 °C / 121 °C, process times starting from 4' (134 °C) or 20' (121 °C) with adjustable drying				
VACUUM TEST	TEST	18	18	19		x
HELIX / B&D TEST	TEST	20	24	28		x
VACUUM + HELIX / B&D TEST (executed in sequence)	TEST	42	46	51		x

* Drying varies according to machine model and volume
 Note: times do not take the max. pre-heating time into account (10 min.).
 Note: times may vary depending on the load and power supply.
 Note: 120 V model times may undergo increments up to a max. of 20%.



SW-PLUS

CUTTING-EDGE TECHNOLOGY



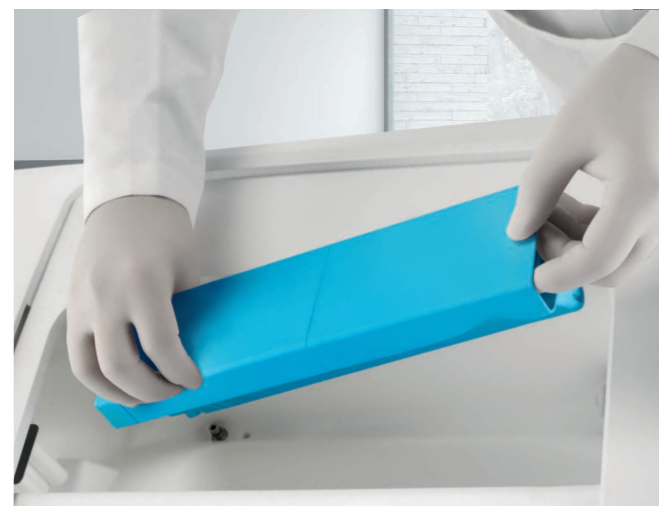
Making Your Life Better.

BU Medical Equipment
Sede Legale ed Amministrativa / Headquarters
 CEFLA s.c.
 Via Selice Provinciale, 23/a
 40026 Imola (BO) - Italy
 t. +39 0542 653111
 f. +39 0542 653344
 sternweber@sternweber.com
 sternweber.com

Stabilimento / Plant
 Via Bicocca, 14/C
 40026 Imola (BO) - Italy
 t. +39 0542 653441
 f. +39 0542 653601



STERNWEBER.COM

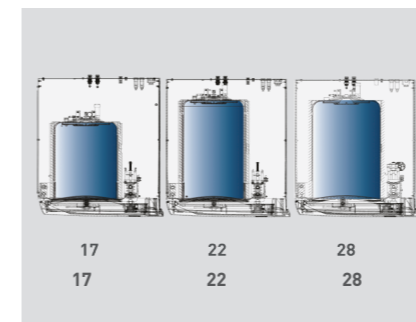


Operating principle
Unlike traditional sterilisers, SW Plus does not require any external water connection for mains water treatment. Thanks to the demineralisation filter on the main tank, the user can fill the latter with plain tap water, thereby significantly optimising spaces, streamlining processes and achieving considerable savings. SW Plus filtration system guarantees unprecedented ease of operation.

Efficiency and saving
Never before has a steriliser provided such high performance and low usage costs. Since water is demineralised by SW Plus filter, the user does not need to source demineralised water: they will only have to fill up the machine tank with tap water. Recipients' storage and deterioration of machine internal components caused by poor water quality will be a thing of the past.



LCD Display
SW Plus is a smart and essential working tool that ensures excellent performance also thanks to the colour LCD touch screen and user-friendly interface. Each check is represented by icons that make it easy to identify current machine status.



3 volumes, one size
The SW Plus range is available in the 17, 22, and 28-litre versions. Three different capacities allow users to choose the most suitable machine according to their needs. External dimensions, being the same for the three machines, make installation easier. The 17 and 22 litre models have five trays while the 28-litre model has six.



DataSter Software for automatic download
Supplied as standard with the machine, DataSter is used to perform the automatic download of cycle reports directly to a network or PC folder. At the end of the cycle, the steriliser sends the PDF file to the selected folder.



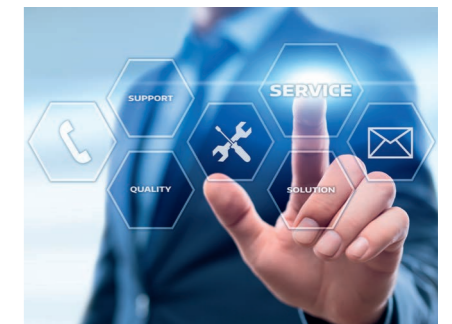
Di.V.A.
Di.V.A. stands for Digital Virtual Assistant. It is the first cloud-based control and traceability system for sterilisation devices. Once saved, data will be available for operators by accessing a dedicated web page.



Test reminder
By setting this function on the display, SW Plus will inform the user when a Vacuum Test, Helix Test or Bowie & Dick test must be carried out. Therefore, it will become impossible to forget about these important operations.



Traceability software
MyTrace is the traceability software available for SW Plus. By using this programme, each set of sterilised instruments can be associated to the patient through a bar code. This essential software completes the sterilisation process and provides legal protection to dentists.



Remote technical support with Easy Check
All sterilisers of the SW Plus range are equipped with incorporated Wi-Fi and Ethernet port. Connected to the Internet by enabling the Easy Check service, they can receive remote support. Intervention times can be significantly reduced thereby allowing technicians to keep machines constantly efficient.



USB
The cycle reports are saved automatically inside the steriliser's memory. Later on, they can be downloaded through the front USB port. The PDF files can be viewed on any device.



Printer
The SW Plus range can be completed with an external printer available as an optional accessory, able to provide reports or bar code labels.